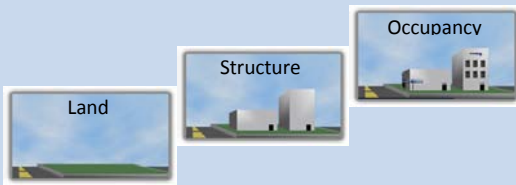


Edgesoft's Enterprise Land Management System (eLMS™) is a flexible, web-based solution that associates every piece of data with a specific location within the City. The system provides shared access to accurate, real-time information such as permits, cases, transactions or applications submitted by citizens.

eLMS™ streamlines the application and approval process and manages data with the following modules:

- ◆ Permits & Inspections
- ◆ Planning & Planner Update
- ◆ Code Enforcement
- ◆ Citizen Request Case Tracking
- ◆ Business License & Tax
- ◆ Fire
- ◆ Public Works

eLMS™ also provides access to other systems for Financials, Business Tax Data, Assessor Data, Historical Permit Data, etc.



### Automate WorkFlow



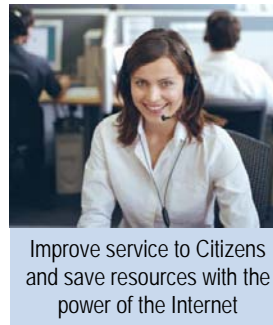
Save time managing and tracking projects by automatically generating work assignments

### Department Integration



Increase Communication between all Development Departments

### Online Services



Improve service to Citizens and save resources with the power of the Internet

### Field Use

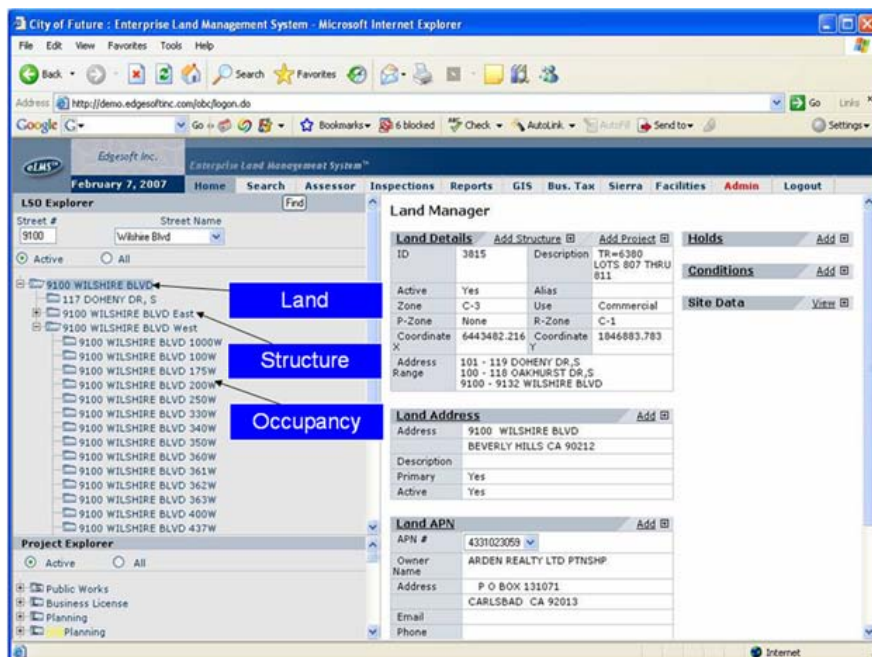


Improve efficiency by entering Inspection results at the jobsite when they occur

The Foundation of eLMS™ is the Land, Structure, Occupancy (LSO) Addressing Model:

- Land – Parcels**
- Structure – Buildings**
- Occupancy – Units**

By relating every piece of data to a specific City location according to address, structure and land use, the LSO Model provides an orderly structure for massive amounts of information.



eLMS™ provides a virtual “dashboard” view for all data concerning everything happening in the City at a given location at any given moment.

User-friendly technology enables eLMS™ to reduce training, maintenance, and system upgrades and creates extraordinary integration between departments.

eLMS™ is compatible with all major operating systems and database software.

“There is nothing I can think of that this solution cannot handle.” – Tom Sloan, Deputy Building Official, City of Burbank